

Mouse GPC3/Glypican 3 Protein

Cat. No. GPC-MM131

Description

Source	Recombinant Mouse GPC3/Glypican 3 Protein is expressed from HEK293 with His tag at the C-terminus. It contains Gln25-Met557.
Accession	Q8CFZ4
Molecular Weight	The protein has a predicted MW of 61.62 kDa. Due to furin-like convertase cleavage site and glycosylation, the protein migrates to 32-42 kDa and 75-85 kDa based on Bis-Tris PAGE result.
Endotoxin	Less than 1EU per µg by the LAL method.
Purity	> 95% as determined by Bis-Tris PAGE > 95% as determined by HPLC

Formulation and Storage

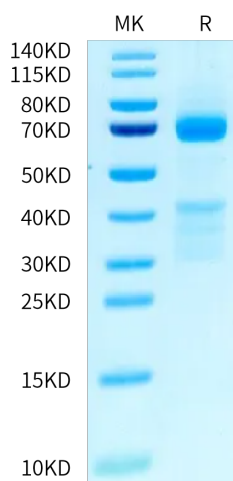
Formulation	Supplied as 0.22 µm filtered solution in PBS (pH 7.4).
Storage	Valid for 12 months from date of receipt when stored at -80°C. Recommend to aliquot the protein into smaller quantities for optimal storage. Please minimize freeze-thaw cycles.

Background

Glypican-3 is a protein, which is encoded by the GPC3 gene in humans. The protein core of GPC3 consists of two subunits, where the N-terminal subunit has a size of ~40 kDa and the C-terminal subunit is ~30 kDa. Glypican 3 is a potential therapeutic target for treating liver cancer and other cancers. Several therapeutic anti-GPC3 antibodies have been developed.

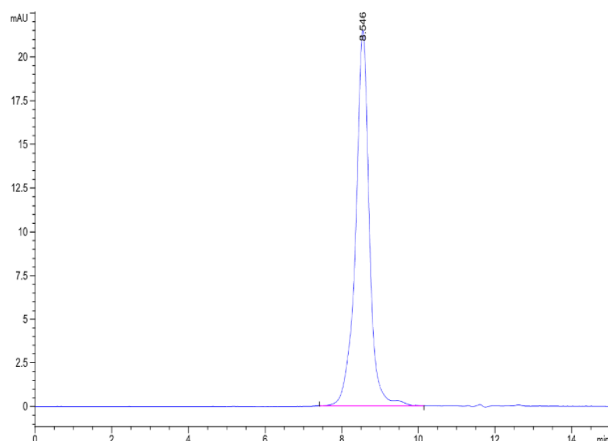
Assay Data

Bis-Tris PAGE



Mouse GPC3 on Bis-Tris PAGE under reduced condition. The purity is greater than 95%.

SEC-HPLC



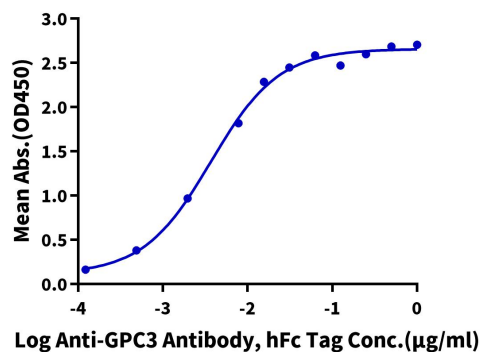
The purity of Mouse GPC3 is greater than 95% as determined by SEC-HPLC.

Assay Data

ELISA Data

Mouse GPC3, His Tag ELISA

0.1µg Mouse GPC3, His Tag Per Well



Immobilized Mouse GPC3, His Tag at 1µg/ml (100µl/well) on the plate. Dose response curve for Anti-GPC3 Antibody, hFc Tag with the EC50 of 3.7ng/ml determined by ELISA (QC Test).